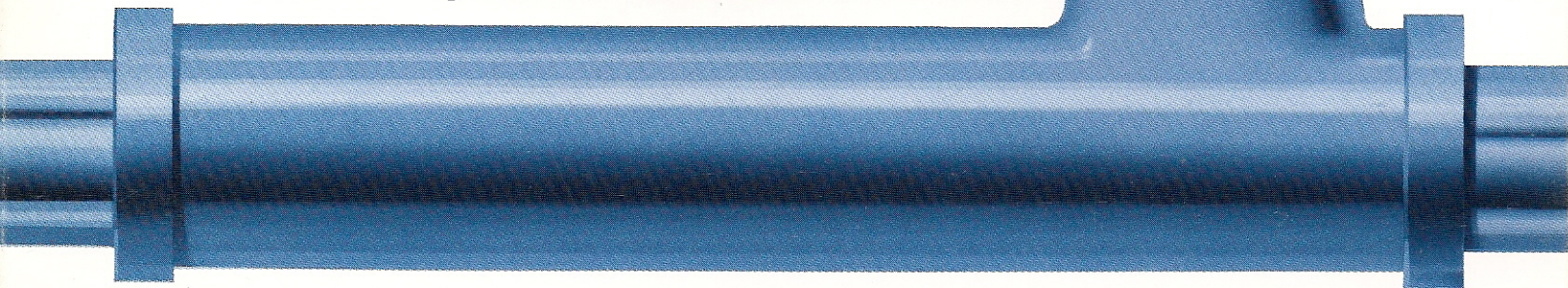


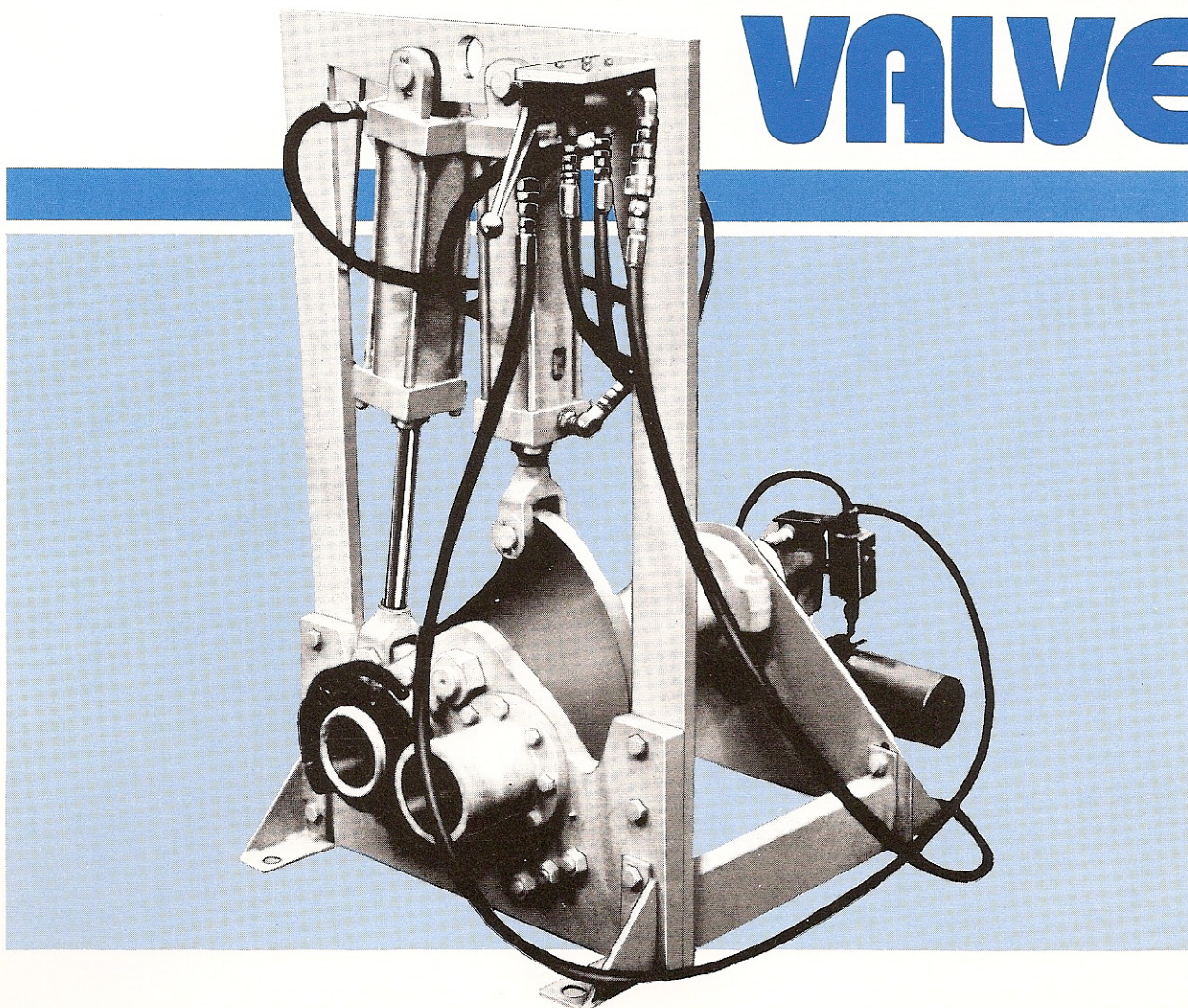


Construction Forms
offers a Hydraulic Diversion Valve with

MUSCLE



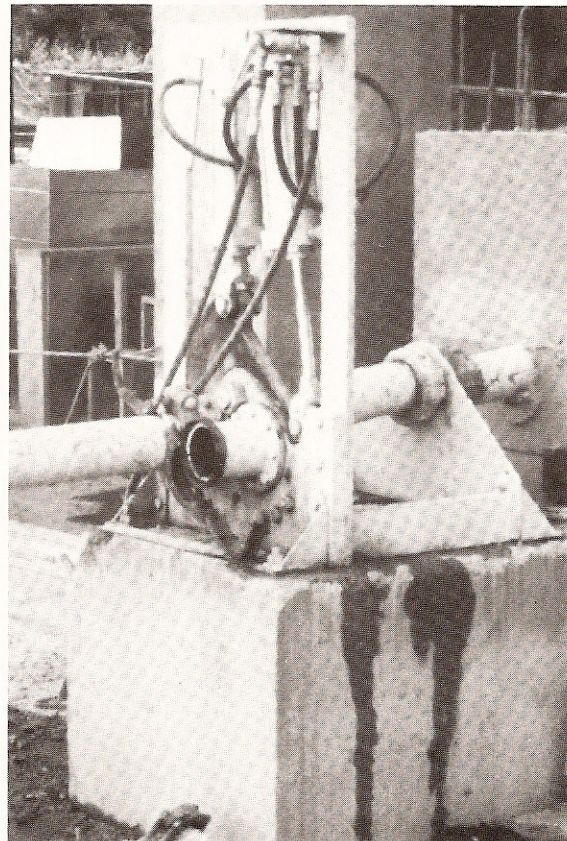
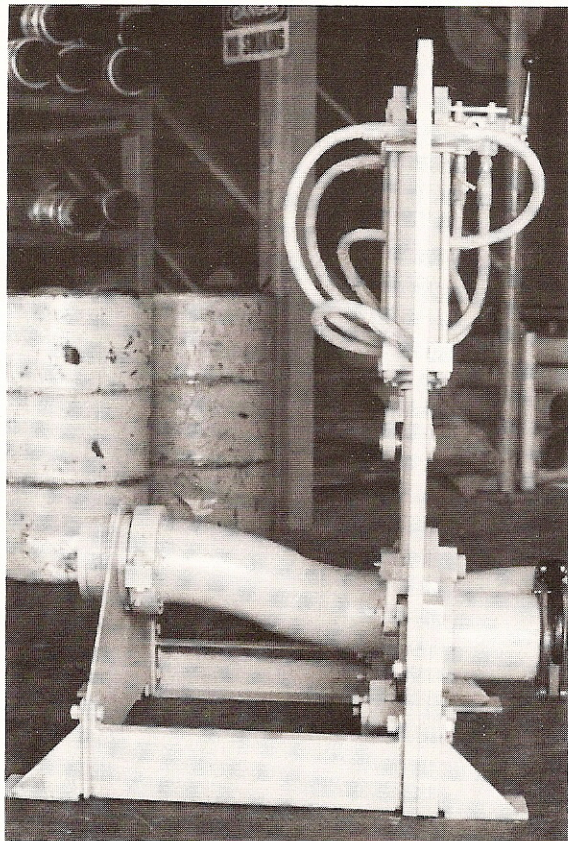
THE EXCLUSIVE C-F HYDRAULIC
**DIVERSION
VALVE**



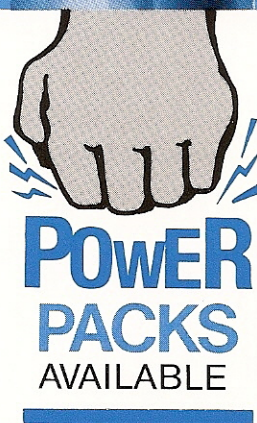
For Concrete Pumping Systems

JOB PROVEN

TO BE TOUGH
EFFICIENT & VERSATILE



All Concrete Pumping operations can improve the efficiency and capability of their concrete pumping systems with a Construction Forms Hydraulic Diversion Valve, also called a "Switcher Valve." This versatile valve can be used to prevent the back flow of concrete in a vertical line or it can be used in set ups where one concrete pump is feeding two lines.



A manually operated, hydraulic four-way valve provides directional control. Switching is safe and easy. When the hydraulic diversion valve is used as a shut off valve, a blind plug is positioned in one of the inlet ports thereby causing the concrete to flow through only one inlet.

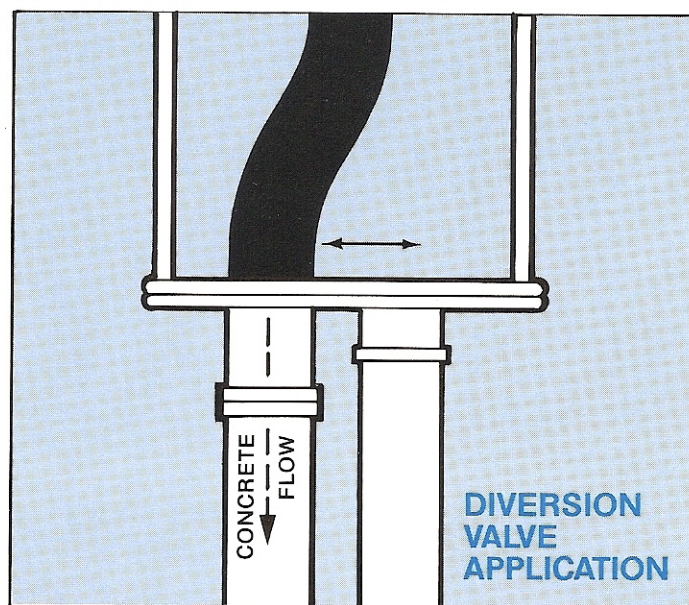
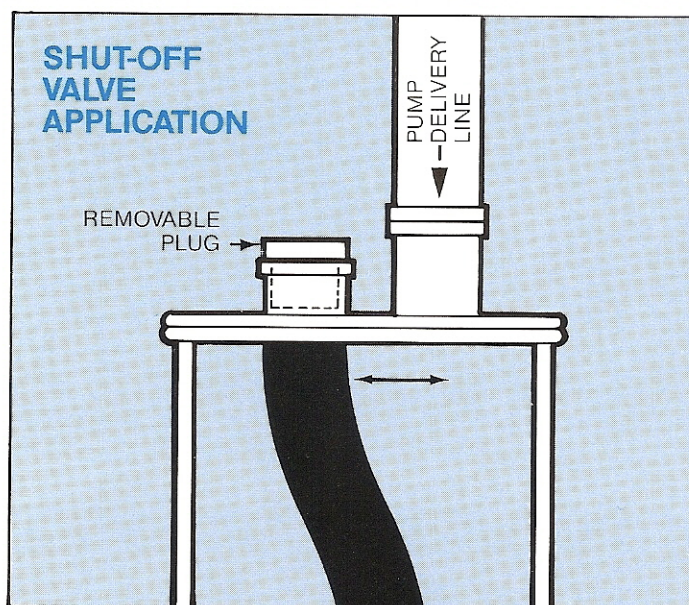
Standard Hydraulic Diversion Valves are manufactured in 5 and 6 inch system sizes and are available with "Hevi-Duty" or metric ends. Other sizes available upon request.

BENEFITS:

- **Versatile** - May be used as a shut-off valve or diversion valve. The use of a blind plug in one of the inlet ports converts it to a shut-off valve.
- **Job Application** - Tunnels, high rises, power plants, or to feed other multiple lines.
- **Rugged construction.**
- **Quick Shut-off** - Maintain the head of concrete in a vertical system when pump is shut down.
- **Ease of clean up** of the system at the end of the day.
- **Lifting eye** allows for ease of moving.
- **Mounting brackets** assures you of secure anchoring.
- **Proven performance** in hundreds of job applications.

FEATURES:

- **1700 PSI maximum working pressure** with surge peaks to 2500 PSI.
- **Two 4 inch-bore** by 12 inch-stroke hydraulic cylinders rated at 3,000 PSI maximum hydraulic pressure.
- **Hydraulic 4-way valve**, manually operated, directional control valve.
- **Hardened wear plates** made from a special abrasion resistant steel.
- **Floating steel rings** provide sealing between ground surfaces.
- **Optional power pack**, 1½ HP, 115/230 volt single phase electric motor. Hydraulic pump rated at 2½ GPM at 1500 PSI.



SHUT-OFF VALVE APPLICATION

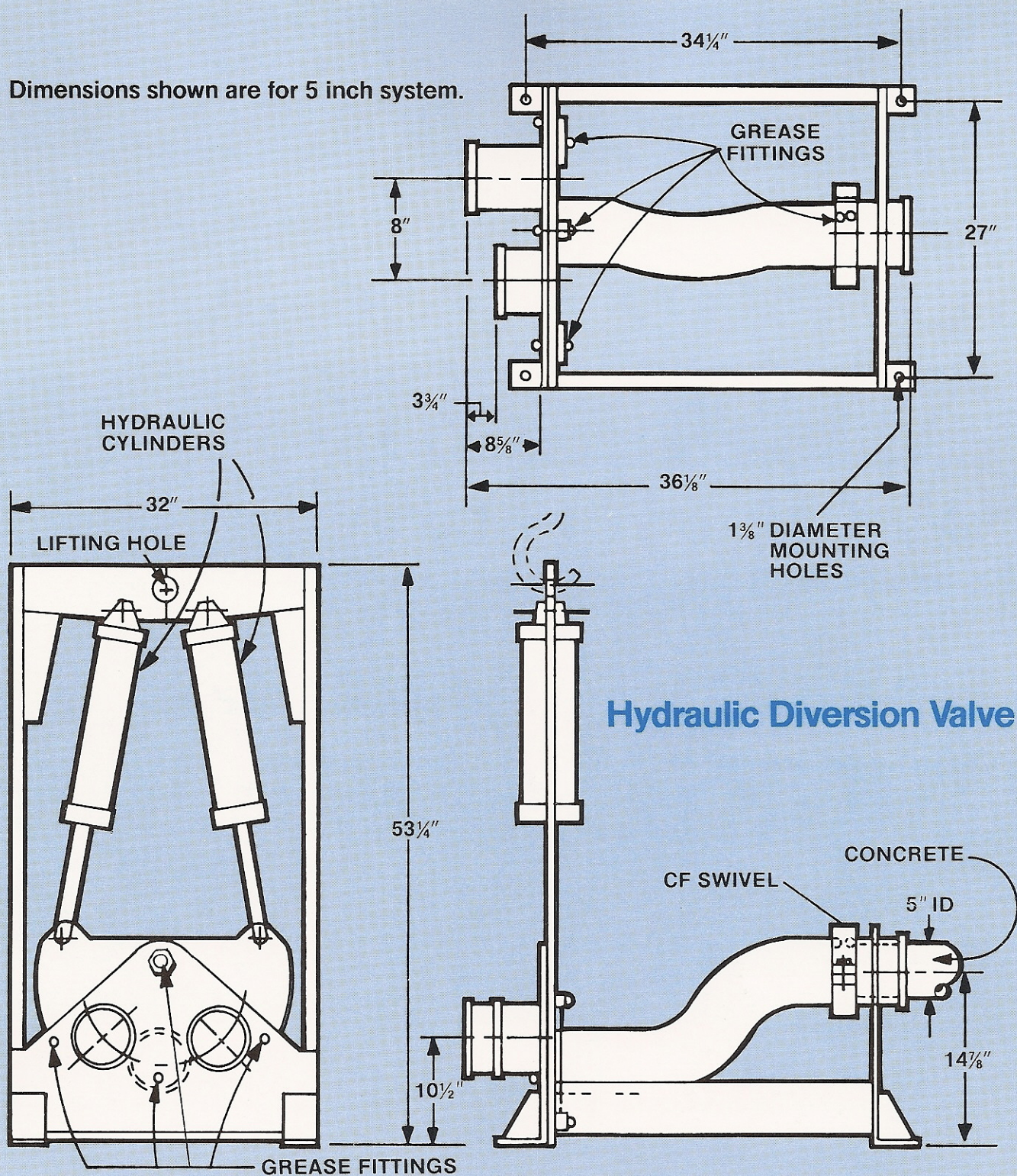
A hydraulically-powered switcher valve can be installed in the horizontal placing line at the base of the vertical rise to shut off the line. The line from the pump is connected to one of two inlet ports. The other inlet port is then fitted with a cap. The outlet port is connected to the placing line system. By means of hydraulic power, the concrete-filled line can be switched to the side with the plug, thereby holding the vertical head of concrete while the pump is stopped. When ready to resume pumping, merely reverse the valve, which connects the line back to the pump delivery line.

For clean out, remove the cap from the alternate inlet port and connect a short length of placing line to the port. Discharge this segment of line into a disposal hopper. The hopper collects the concrete from the vertical line as it is cleaned from the top down.

DIVERSION VALVE APPLICATION

The versatile switcher valve can be used in setups where one concrete pump is feeding two placement lines. By this technique, a smooth and quick conversion can be made from one line to the other to increase the concrete placing capacity and flexibility of the entire system.

Dimensions shown are for 5 inch system.



Hydraulic Diversion Valve

For more information contact your local distributor or write to:

CF Construction Forms, Inc.

Home Office:
W60 N151 Cardinal Ave.
Cedarburg, WI 53012
(414) 377-6565
FAX (414) 377-4049

Other Locations:
1600 W. 139th St.
Gardena, CA 90249
(213) 532-6115
FAX (213) 323-7313

42 Colonial Dr.
Piscataway, NJ 08854
(201) 981-0123
FAX (201) 981-0271